

Q series

QLV5V14

Glass Door Reach-In Merchandiser


KYSOR / **WARREN**[®]



We Listen, Respond... and Deliver!

The QLV5V model is designed to merchandise frozen foods or ice cream. The combination of recessed shelves, vertical lighting, large doors and energy saving features make these cases the ideal addition to your frozen food department. This model offers 24" standard shelves or optional 27" shelves for extra merchandising.

KEY FEATURES:

- Energy Efficient Operation**
- Heavy Duty Front Bumper**
- Aluminum Bottom Liner**
- Non CFC Foam Insulation**
- Aluminum Finned-Copper Tubed Coil**
- Under Case Air Return**



Applications



QLV5V, QIV5V

Glass Door Reach-In Merchandiser



QLV5V3 (3000 SERIES)



QLV5V1 (2500 SERIES)



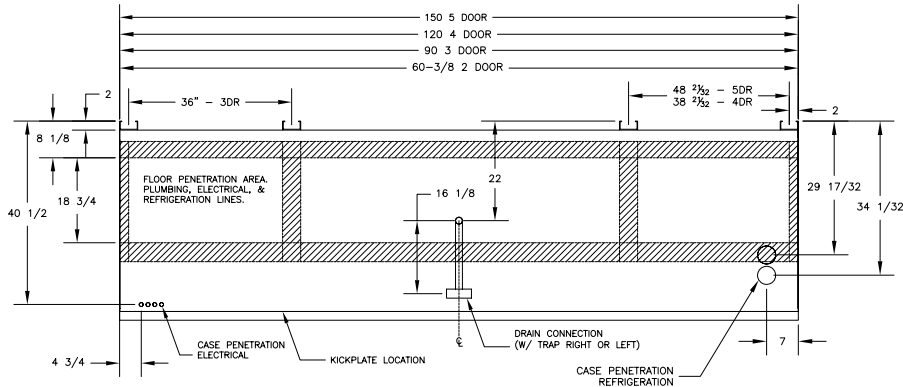
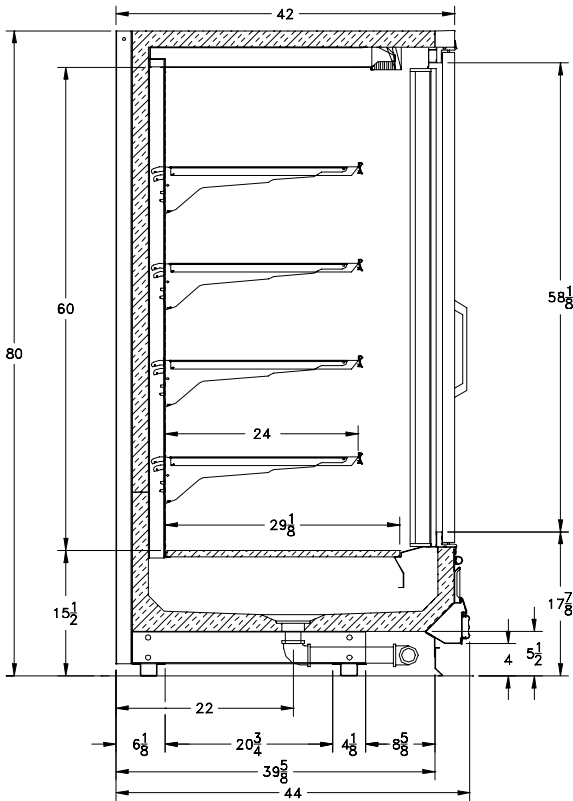
QLV5V3 (3000 SERIES)

| Capacities | 2 Door | 3 Door | 4 Door | 5 Door |
|---|----------------------|----------------------|-----------------------|-----------------------|
| Facing Area | 24.0 ft ² | 35.8 ft ² | 47.8 ft ² | 59.7 ft ² |
| Cubic Capacity | 59.2 ft ³ | 88.3 ft ³ | 117.7 ft ³ | 147.1 ft ³ |
| Dimensions | 2 Door | 3 Door | 4 Door | 5 Door |
| Overall Length (w/o ends) | 60.375" | 90" | 120" | 150" |
| Thickness - Pair Ends | 3" | 3" | 3" | 3" |
| Case Data | 2 Door | 3 Door | 4 Door | 5 Door |
| Anti-Sweat Amps (Eliminator Doors) | 2.43 | 3.32 | 4.40 | 5.44 |
| Anti-Sweat Amps (Standard Doors) | 3.67 | 4.73 | 6.25 | 7.69 |
| Fan Amps Std | 0.88 | 1.32 | 1.76 | 2.20 |
| Light Amps Doors | 1.39 | 1.80 | 2.32 | 2.79 |
| Drain Pan Heater (for hot gas defrost) | 0.39 | 0.65 | 0.91 | 1.17 |
| QIV5V – Evaporator Temperature –17 °F Btu/Hr Requirements (Eliminator Doors) | 2640 | 3960 | 5280 | 6600 |
| QIV5V – Evaporator Temperature –18 °F Btu/Hr Requirements (Standard Doors) | 2920 | 4380 | 5840 | 7300 |
| QLV5V – Evaporator Temperature -10 °F Btu/Hr Requirements (Eliminator Doors) | 2500 | 3750 | 5000 | 6250 |
| QLV5V – Evaporator Temperature -11 °F Btu/Hr Requirements (Standard Doors) | 2750 | 4125 | 5500 | 6875 |

| Defrost | Per Day | Fail Safe | Termination |
|----------|---------|-----------|-------------|
| Electric | 1 | 60 min. | 65 °F |
| Hot Gas | 1 | 30 min. | 65 °F |

| Case Model | Discharge Air Velocity | Discharge Air Temperature |
|------------|------------------------|---------------------------|
| QIV5V | 250 FPM | -12 °F |
| QLV5V | 250 FPM | -5 °F |

All electrical data are based on 115V.



Enodis® One Company. Countless Solutions.

KYSOR // WARREN

Type I refrigerator, intended for use in an area where the environmental conditions are controlled and maintained such that conditions do not exceed 75°F and 55% relative humidity. Kysor/Warren, whose policy is one of continuous improvement, reserves the right to change at any time, specifications, design or prices without incurring obligation.



Dual-Jet and Air Defrost are registered trademarks of Kysor/Warren. Kysor/Warren, a subsidiary of Enodis®, PLC. All Rights Reserved.

Kysor/Warren cases are UL and NSF listed.

QLV5V-0805PD

5201 Transport Blvd. / Columbus, GA 31907
800-866-5596 - Phone / 706-568-8990 - Fax / solutions@kysorwarren.com