

QWST

Twin Island Case



QWST
Twin Island Case

The energy saver model QWST offers tremendous profit potential. Multiple configuration lineup options with the end cap, sides and canopy offer unlimited versatility for customer convenience, as well as increased impulse buying. Dual temperature kit changes allow for seasonal displays with turkeys, hams and other frozen items. Customized options and accessories focus your shoppers' attention on the product.

Standard Features

- Energy Efficient Operation
- Aluminum Fin Copper Tube Coil
- Bottom Mounted Coil
- Heavy Duty Steel Base
- Painted Interior (White or Black)
- Hinged Fan Plenum
- All-Steel Construction
- Price Tag Molding

Options and Accessories

- ECM or PSC Energy Efficient Fan Motors
- Case Controller Technology
- Three Trim Packages Available
- Environmentally Friendly Bumpers
- Graphics Available for Case Exterior
- Electric or Hot Gas Defrost
- 4" Raised Base
- Standard or Telescoping Display Racks
- Single Side Coil Piping/Wiring
- Variety of Thermometers
- Duplex Receptacle Kit
- Aluminum Night Curtains
- Shop-Around Ends

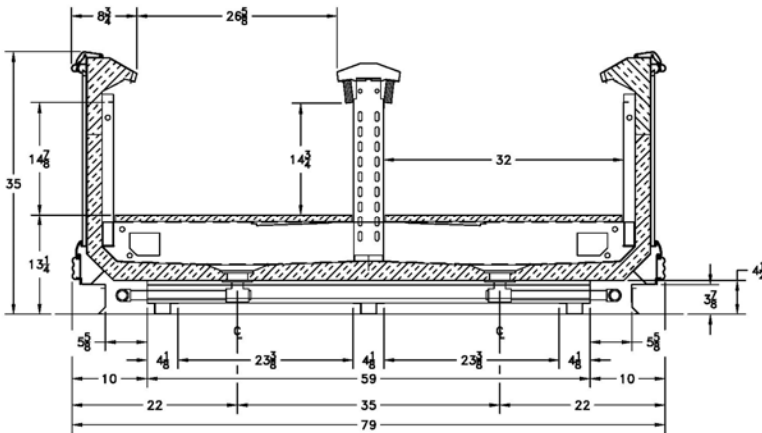
Specifications

All models available 4', 6', 8' and 12'.

CAPACITIES			
	6'	8'	12'
Length	72.25 ft.	96.375 ft.	144.5 ft.
Facing Area	39.5 ft ²	53 ft ²	79 ft ²
Cubic Capacity	19.8 ft ³	26.4 ft ³	39.6 ft ³

Note: For more technical detail and configurations see Specification Sheets for the QWST 8 ft and 12 ft Integrated Islands with Unitized Ends.

Type I refrigerator, intended for use in an area where the environmental conditions are controlled and maintained such that conditions do not exceed 75 deg F and 55% relative humidity. Kysor//Warren, whose policy is one of continuous improvement, reserves the right to change at any time, specifications, design or prices without incurring obligation. Dual-Jet and Air Defrost are registered trademarks of Kysor//Warren.



Add 3" thickness for a pair of ends.



The above case model, has case lengths that are UL and NSF approved.

