

QS2AG
Multi - Deck

 **KYSOR** // **WARREN**[®]



Celebrating Over 125 Years
Keeping It Cool and Green



Produce



Cheese



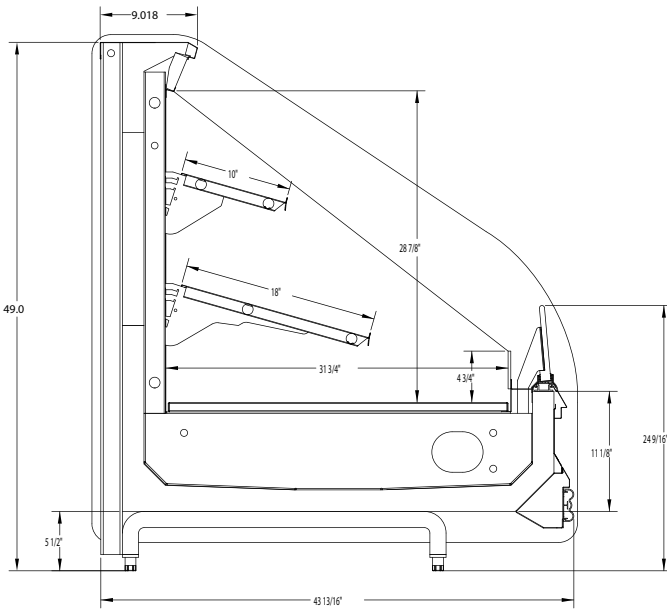
Meat



Enodis

QS2AG

Multi - Deck



Add 3" thickness for a pair of ends

Type I refrigerator, intended for use in an area where the environmental conditions are controlled and maintained such that conditions do not exceed 75°F and 55% relative humidity. Kysor//Warren® whose policy is one of continuous improvement, reserves the right to change at any time, specifications, design or prices without incurring obligation. Dual-Jet® and Air Defrost® are registered trademarks of Kysor//Warren®



The above case model, has case lengths that are UL and NSF approved.

The environmentally friendly, energy saver model, QS2AG, offers tremendous profit potential. The shorter canopy and the straight, front glass provide greater product visibility. Products can be attractively displayed in a variety of methods to increase customer convenience as well as impulse buying. Its unlimited versatility makes this case ideal for merchandising produce, cheese, deli items and meat.

Standard Features

- Energy Efficient Operation
- Aluminum Fin Copper Tube Coil
- Bottom Mounted Coil
- Heavy Duty Steel Base
- Painted Interior (White or Black)
- Dual-position Brackets
- Under Case Air Return
- 7.5" Straight Plexiglas Front
- Designed for Two Shelves

Options and Accessories

- ECM or PSC Energy Efficient Fan Motor
- Case Controller Technology
- Three Trim Packages Available
- Environmentally Friendly Bumpers
- Graphics Available for Case Exterior
- Electronic Expansion Valves
- Off-Cycle/Hot Gas Defrost
- LED or T8 Lights
- 6" Curved Plexiglas Front or Thermopane
- Skid Rail
- Canopy Light
- Raised Base
- Rear Access or Top Piping
- Winged Plexiglas End

Specifications

All models available in 4', 6', 8' and 12'

CAPACITIES				
	4'	6'	8'	12'
Length	48.25	72.25	96.375	144.5
Facing Area	13.2 ft ²	19.7 ft ²	26.3 ft ²	39.4 ft ²
Cubic Capacity	14.9 ft ³	22.3 ft ³	29.8 ft ³	44.6 ft ³

Note: For more technical detail and configurations see the Specification Sheet for the QS2AG Multi-Deck Model.

REV. 20080428

