

Q series

QD6

Multi Deck Merchandiser



QD6L - low front dairy configuration with e-line trim level

The energy saver model QD6 offers tremendous profit potential. Its unlimited versatility makes this case ideal for merchandising dairy items. Products can be attractively displayed in a variety of methods to increase customer convenience, as well as increase impulse buying. This model features multi-position shelves and open access to product. The QD6 is easily cleaned and extremely energy efficient. The 4 foot model can be utilized as a spot merchandiser for special displays. There are also low and high front models available.

KEY FEATURES:

- Energy Efficient Operation**
- Heavy Duty Steel Base**
- Non CFC Foam Insulation**
- Bottom Mounted Coil**
- Aluminum Finned, Copper Tubed Coil**
- Under Case Air Return**


KYSOR / **WARREN**



Applications

QD6, QD6H, QD6L

Multi Deck Merchandiser



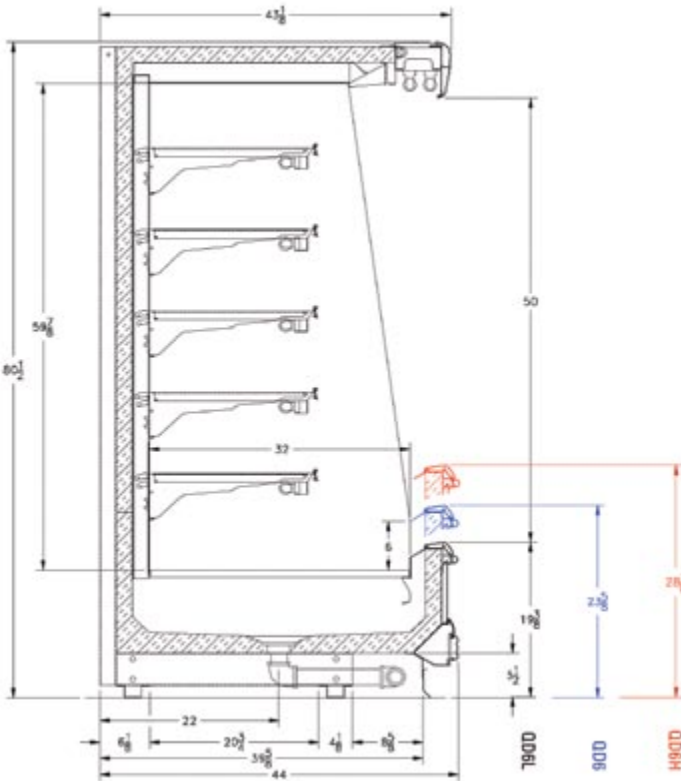
QD63 (3000 SERIES)



QD61 (2500 SERIES)



QD63 (3000 SERIES)



Capacities	4'	6'	8'	12'
QD6 Square Footage	16.8 ft ²	25.1 ft ²	33.5 ft ²	50.2 ft ²
QD6 Cubic Capacity	47.8 ft ³	71.6 ft ³	95.5 ft ³	143.2 ft ³
Dimensions	4'	6'	8'	12'
Overall Length (w/o ends)	48.25"	72.25"	96.375"	144.5"
Thickness - Pair Ends	3"	3"	3"	3"
Case Data	4'	6'	8'	12'
Anti-Sweat Amps	N/A	N/A	N/A	N/A
Fan Amps Std	0.52	0.70	1.04	1.56
Light Amps (T8 light bulbs/single row canopy)	0.46	0.92	0.92	1.48
Evaporator Temperature (°F)	23	23	23	23
QD6 BTU/Hr Requirements	5200	7800	10400	15600
QD6H BTU/Hr Requirements	4800	7200	9600	14400
QD6L BTU/Hr Requirements	5540	8310	11080	16620

QD6/QD6H Defrost	Per Day	Fail Safe	Termination
Off Cycle	4	30 min.	48 °F
Hot Gas	4	20 min.	48 °F

QD6/QD6H Discharge Air Velocity	Discharge Air Temperature
275 FPM	31.5 °F

All electrical data are based on 115V and unlighted shelves.

